

# 401 W A Street

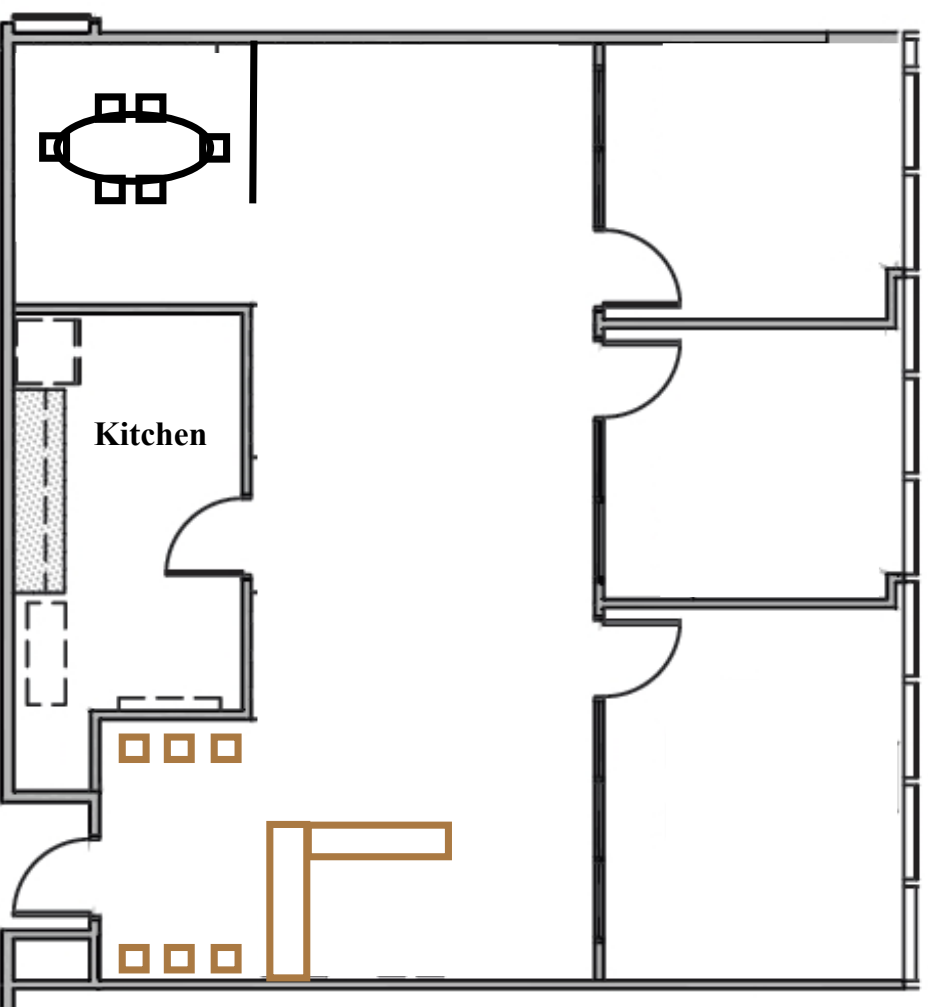
Downtown San Diego



<b>BUILDING CLASS</b>	Class A
<b>YEAR BUILT</b>	1982
<b>FLOORS</b>	27
<b>BUILDING RSF</b>	556,749 SF
<b>OWNER</b>	EMMEES Realty Services of Cal
<b>PERCENT LEASED</b>	92.2%
<b>AVAILABLE SPACE</b>	128,783 SF
<b>BASE RENT</b>	\$2.95/SF
<b>PARKING RATES</b>	\$200/month
<b>ADDITIONAL PROPERTY INFORMATION</b>	<ul style="list-style-type: none"> <li>• Fitness center</li> <li>• Energy Star labeled</li> </ul>



# Suite 1820



1,602 SF

\$4,725+Electric/ Monthly

